

Disaster Response Mayor's Role and Lessons Learned

Mayor Steve Bach Colorado Springs
September 2014

The contents of this presentation reflect the view of the presenter, not of CML.



Waldo Canyon



The contents of this presentation reflect the view of the presenter, not of CML.

2



Relationships



The contents of this presentation reflect the view of the presenter, not of CML.

3



Communication



The contents of this presentation reflect the view of the presenter, not of CML.

4



Investment in Emergency Management



The contents of this presentation reflect the view of the presenter, not of CML.

5



City/Community Training



The contents of this presentation reflect the view of the presenter, not of CML.

6



Wildfire Mitigation



The contents of this presentation reflect the view of the presenter, not of CML.



7

Volunteers



The contents of this presentation reflect the view of the presenter, not of CML.



8

Recovery

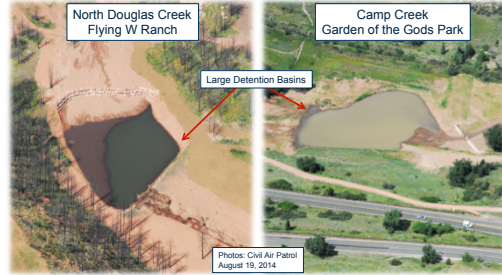


The contents of this presentation reflect the view of the presenter, not of CML.



9

Flood Mitigation



The contents of this presentation reflect the view of the presenter, not of CML.



10

Discussion



The contents of this presentation reflect the view of the presenter, not of CML.



Disaster Response Mayor's Role and Lessons Learned

Mayor Steve Bach Colorado Springs
September 2014

The contents of this presentation reflect the view of the presenter, not of CML.



2014 Colorado Mayors' Summit
September 11, 2014

Lessons From the 2013 Flood

Bill Pinkham, Mayor of Estes Park

Dress Rehearsal..... 2012 FIRES

- **July: Woodland Heights Fire**
 - 22 Homes destroyed
 - Southwest side of town evacuated
- **December: Fern Lake Fire**
 - Over 3,000 acres burned
 - 1 dwelling destroyed
 - Park buildings & Spur 66 evacuated
- **Excellent preparation for next event**



On September 12, 2013, it all changed....

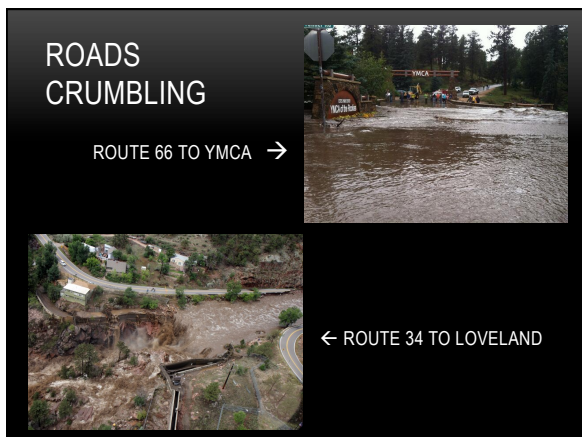
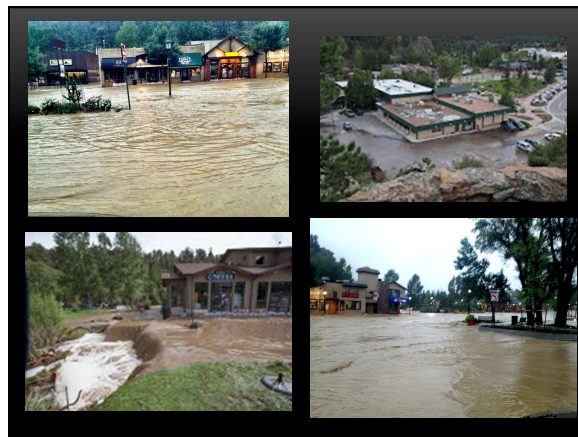
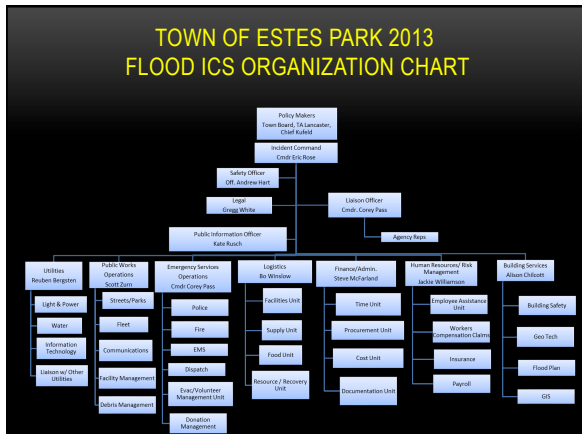
Flooding 2013



EMERGENCY OPERATIONS PLAN

Town Government and Cooperating Agencies

- Mayor
- Trustees
- Administrator
- Attorney
- Police
- Finance
- Fire Dept
- Code Enforcement
- Public Works
- Light & Power
- Water Dept
- Building Dept
- Health Dept
- Coroner
- Red Cross
- Salvation Army
- NIVOD
- CERT



ADDRESS PUBLIC CONCERNS



FOOD



SHELTER & Clothing

CLEAN UP BEGINS



TWO WEEKS LATER

Getting back to normal



- Elk Fest
- Farmers Market
- Visitors return

THEN THE NATIONAL PARK CLOSED!



SHOPS ARE EMPTY!

HICKENLOOPER TO THE RESCUE



WE ARE MOUNTAIN STRONG

COLORADO KICKS IN \$362,700 TO REOPEN
ROCKY MOUNTAIN NATIONAL PARK - THE DENVER POST



STATE HIGHWAYS REOPEN TO ESTES PARK



Lyons to Estes Park
November 4th

Loveland to Estes Park
November 21st



CELEBRATION



ESTES PARK IS OPEN FOR BUSINESS



THE FINAL TALLY...

- Over 1/2 the residences and businesses in the Estes Valley were affected by water, mud, sewer outage, road access issues.
- Over 230 residential and business structures severely damaged and 8 destroyed
- \$20 million damage to Estes Valley
- \$11 million damage to Town infrastructure

GENERAL CONSIDERATIONS

- Lost utilities (all in some areas)
- Public safety
- Residents cut off due to road failures
- Public health risks including temporary boiling order and loss of sewer lines/plants
- Locating missing individuals/connecting them with families
- Communications lost including landlines, cell service and internet, even local 9-1-1; even results in the use of social media for 9-1-1-like emergencies, requiring staff to monitor 24/7
- Near evacuation of Town Hall (EOC/JIC) due to water infiltration
- Health/pharmacy services limited
- Mail/deliveries cease
- General public supplies dwindling
- Resources needed from other agencies difficult to acquire due to loss of highways
- Managing the influx of offers for donations/volunteers/resources.

TOWN OF ESTES PARK EMERGENCY OPERATIONS PLAN

- Provides general guidelines and principles for managing and coordinating the overall response and recovery activities of Town government before, during, and after major emergencies and disaster events that affect the Community.
- Defines roles and responsibilities

Be Prepared...



- External Training with Larimer County personnel at FEMA's Emergency Management Institute:
 - Town Administrator, Police Chief, Police Commanders and PIO
 - Staff trained for FEMA/Dept of Interior Type 3 Incident Management: Police Chief, Police Commanders and PIO
- Internal Training:
 - All town staff trained in basic ICS using FEMA's online training
 - 20 staff trained to assist PIO in JIC operations
 - Table top exercise with Town Board

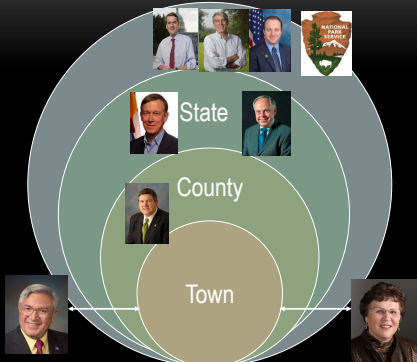
EOP DESIGNATED ROLE AND RESPONSIBILITIES OF MAYOR

- Mayor of the Town of Estes Park
- Statutory responsibility to effect the declaration of a local disaster.
- Makes decisions concerning the commitment of resources beyond those normally available to the Town's emergency response agencies.
 - Funding
 - Personnel
 - Equipment

THE ROLE OF THE MAYOR

- "Face of the town"
 - Public meetings
 - On the street – door to door
 - Evacuation Centers
 - Media
 - Volunteer Centers
- Reassure community that government is responding properly
- Listen to public and business owners

Provide representation to partner agencies as requested and to other elected officials at all levels to help with response needs



THE ROLE OF THE MAYOR

- Provide calm leadership, reassurance and encouragement for the community
- Conduit for information to/from the community for the incident managers
- Help set reasonable expectations of what we can do
- Provide support for staff. Be available to make policy decisions or emergency declarations if needed
- Assist staff in keeping Town Board informed

ENGAGE TOWN BOARD

- Execute temporary emergency measures
 - Funding & Administrator powers
- Define Board responsibilities & protocol
- Establish Mayor as spokesperson with media
- Feedback mechanism to EOC
- Stay out of the way... Let emergency personnel and first responders do their job.

WE ARE MOUNTAIN STRONG... !!!

