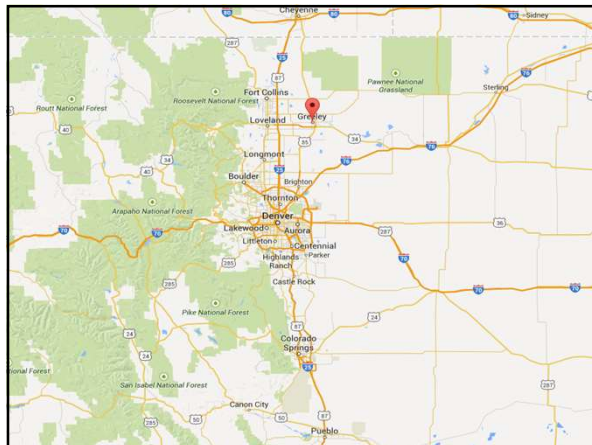
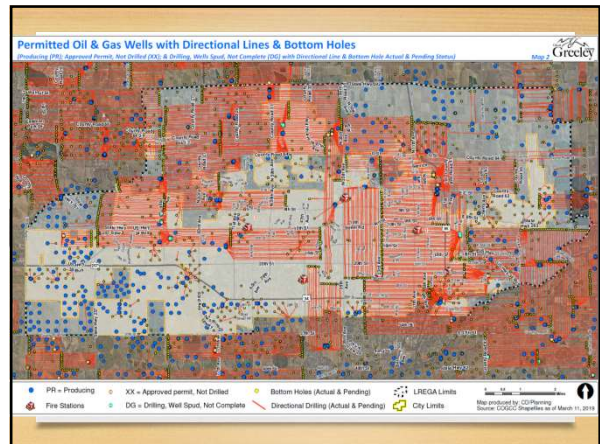




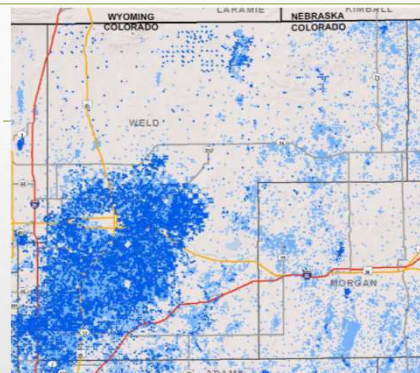
## Oil and Gas Development in Greeley, Colorado

Brad.Mueller@greeleygov.com  
Director, Community Development Department



### Activity within Greeley city limits

- Working numbers
  - 411 active wells (includes about 100 that are shut in)
    - All require Use by Special Review
    - Equals about 800 ac (1.3 sq miles) surface (2.7%)
    - Several dozen Plugged & Abandoned in the last years
  - Approximately 1,200 within city + Long-Range Growth Area
  - 500 inactive wells (approx.)
    - Includes simply abandoned, as well as plugged & abandoned
- Generally clustered – multiple wells at each site
  - 6 - 10 urbanized areas (i.e., not “everywhere”)



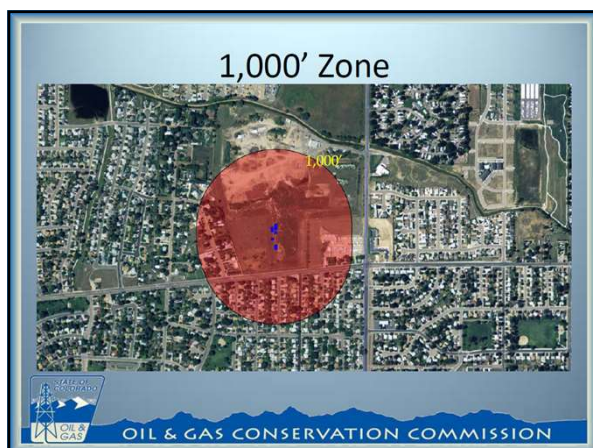
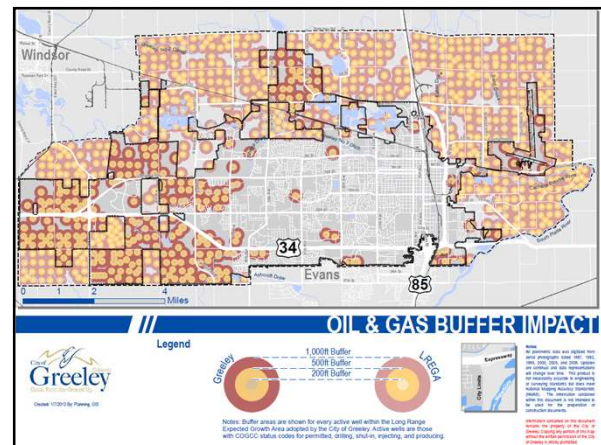
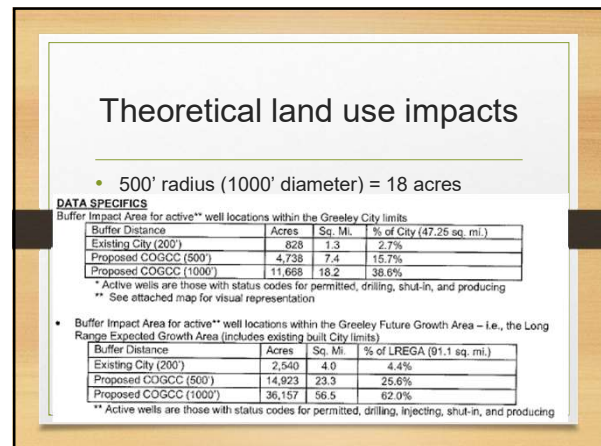
### Context

- Land use process
  - Planners trained for all types of land use scenarios
  - Regulations start with the general, go to specific
  - Zoning, subdivision, site planning all apply
- Transparency & public education process
  - Oil and gas mineral extraction process
  - Regulatory information & state-tracked research
    - Resource page on website









## Questions?

---

Brad Mueller  
Director, Community Development Dept.  
City of Greeley  
brad.mueller@greeleygov.com  
970-350-9786

