



Managing the Unhoused Lessons Learned From Public Works

Mark Jackson

- Public Works Director, City of Loveland

Keith Reester

- Public Works & Utilities Director, City of Littleton
 - Public Works Section CML
 - American Public Work Assoc



The Challenge & Opportunity in Our Communities

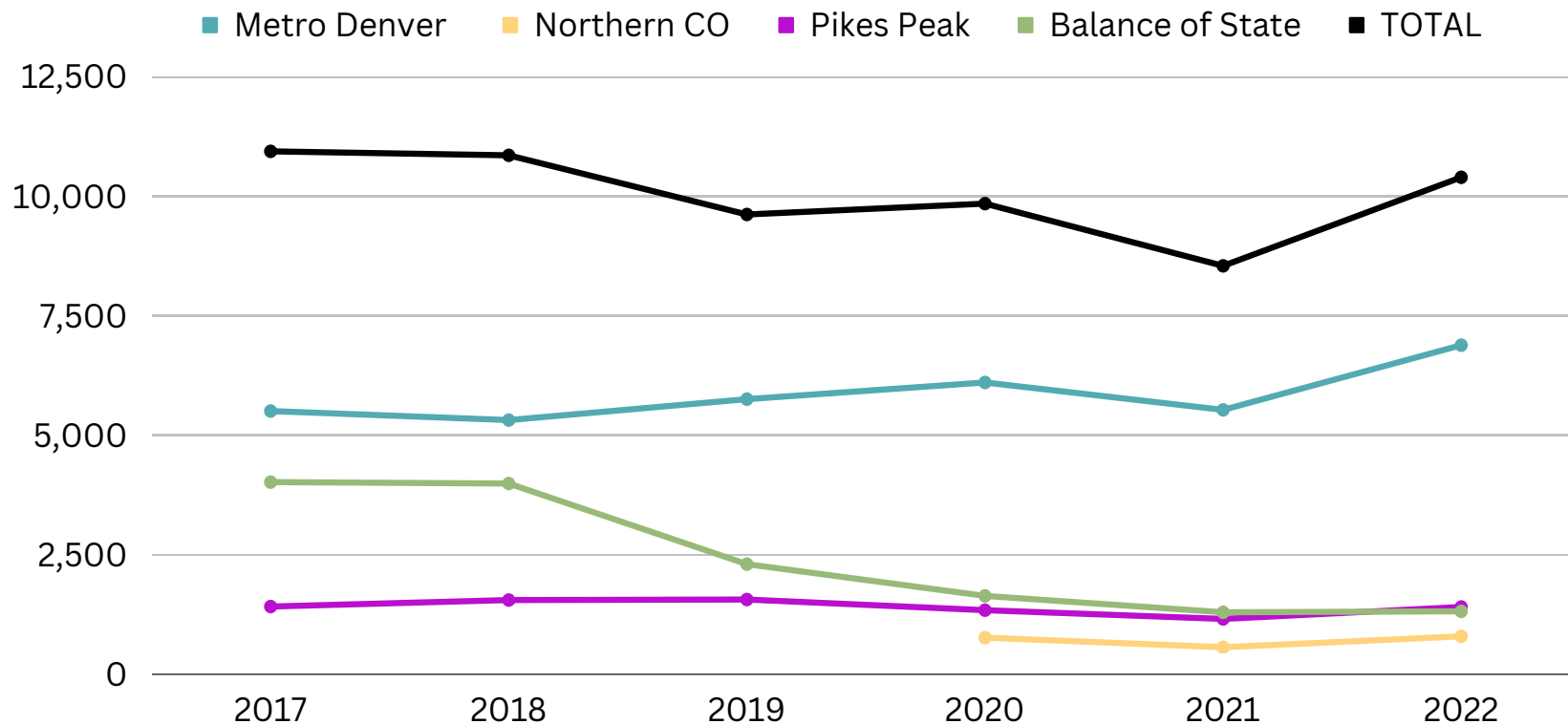
Today's Agenda

- The Vastness of the Challenge & Opportunity
- Common Best Practices in Public Works Support
- The Loveland Story
- Lessons Learned for Colorado Communities
- Discussion, Ideas, & Shared Lessons Learned



The Colorado Challenge

TOTAL HOMELESSNESS IN COLORADO (FROM POINT IN TIME COUNTS)



THE COLORADO STATE OF
HOMELESSNESS REPORT 2022



THOUGH APPROXIMATIONS VARY, WE ESTIMATE THE TRUE NUMBER OF PEOPLE EXPERIENCING HOMELESSNESS IN CO IS BETWEEN 10,000-53,000

10,397



Total number of Coloradans experiencing homelessness according to PIT count

15,374



Students experiencing homelessness, doubled-up, or unstably housed in the 2020-2021 school year

32,233



People who accessed homelessness services according to HMIS data

53,000



Individuals without stable housing covered by Medicaid in 2019

The Colorado Challenge

36%



Percentage of the unhoused population that is experiencing chronic homelessness

36%

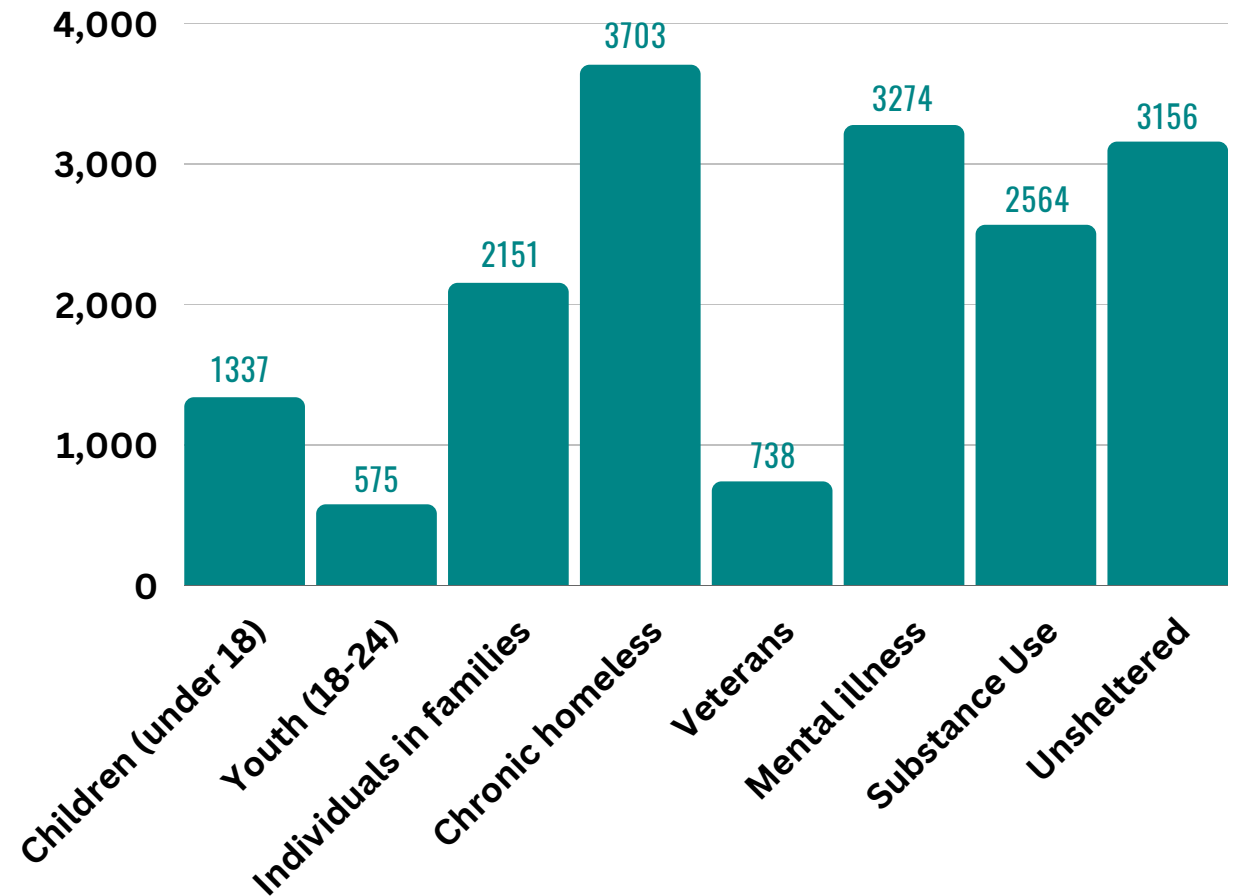


Decrease in the number of individuals in families with children seeking homelessness services since 2017

130%



Increase in chronic homelessness in CO over the last ten years



*These numbers represent various subgroups and do not constitute parts of a whole.

U.S. Public Works Best Practices

- Establish strong team coordination
- Plan, plan, and plan some more
- Develop your community outreach team
- Provide ample time to engage with people during this important time
- Ensure voluntary, client-centered, and trauma-informed care
- Provide adequate, appropriate, and low-barrier resources
- Identify an experienced service partner with deep ties to the community and let them lead
- **These strategies are best practices for all public works efforts in communities**
 - Don't shortchange the front end...you can pay on the other end



City of Loveland

ILLEGAL ENCAMPMENT BAN: A YEAR OF LESSONS LEARNED(ING?)

MARK JACKSON
LOVELAND PUBLIC WORKS

JUNE 27, 2023



AGENDA



OUR JOURNEY INTO
HOMELESSNESS RESPONSE



HOW WE STARTED



TIMELINE



WHERE WE ARE NOW



LOVELAND'S HOMELESS



WHAT COMES NEXT



QUESTIONS

WHAT IS HAPPENING?

Since 2016, Loveland has been working on solutions to address homelessness.

Loveland City Council passed an emergency unauthorized encampment ban on May 17, 2022 that allows the City to move anyone camping illegally on public property.

- To mitigate unreasonable risk of fire.
- To preserve public health, safety, public and private property.



WHAT WE FACED



HOW WE STARTED

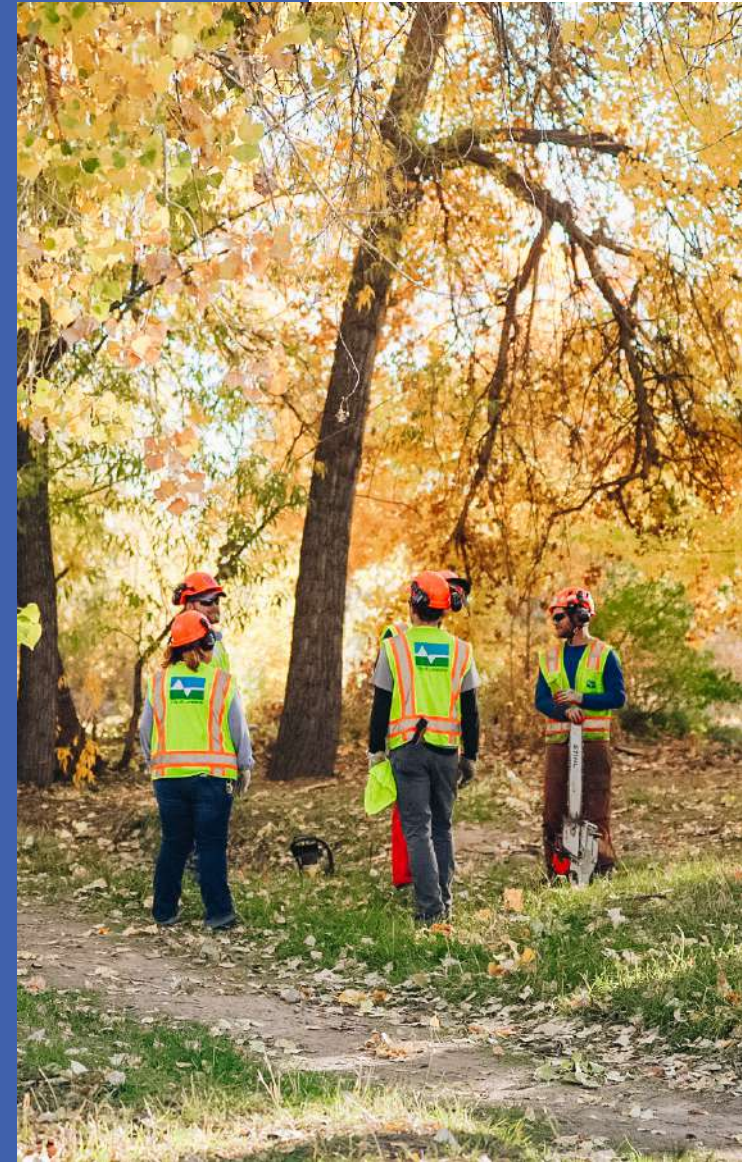
City Incident Command Model activated on May 18, 2022.

Focus: Full effort to remove all unauthorized encampments from City/public property that exist now.

Step #1: Identify the HOW

Step #2: ACTIVATE

- June 24, 2022 = First encampments moved



WHAT IS THE PROCESS?

THERE ARE TWO OPTIONS FOR CAMPERS ONCE THEY RECEIVE NOTICE.

CITY GIVES NOTICE*

*City can only enforce on public property.
Unauthorized encampments on private property
need to be handled by the property owner with
a trespassing call.

SHELTER

- Accept move to shelter
- Select valuables to storage
- Moved to shelter
- Meet with staff/connect to services

MOVE ON

- Decline shelter offer
- Notified to leave
- Don't comply = issued citation
- Citations or other consequences

HOW WE STARTED

Loveland did not previously have a year-round shelter.

Loveland Resource Center

- 137 S. Lincoln Ave.

S. Railroad Facility

- SE 3rd Street and Railroad Avenue



TIMELINE



PLANNING/PREPARATION FOR FULL ENFORCEMENT

TRANSITIONAL SHELTER - MOTEL (TS)

LOVELAND RESOURCE CENTER (LRC)

RESTORATION

MAY
2022

JUNE
2022

JULY
2022

AUGUST
2022

SEPT.
2022

JAN.
2023

APRIL
2023

MAY 17

Council enacted emergency unauthorized encampment ban

JUNE 17

City issued first notice to campers

JUNE 24

City moved first two campers to shelter

JULY 14

Concept Review by staff for South Railroad site

JULY 18

LRC opened for daytime use

AUGUST 1

LRC opened for overnight shelter

AUGUST 10 + 24

Public outreach for South Railroad (SR) Site

SEPTEMBER 30

Tent overflow shelter opened at LRC

King's Crossing closure - restoration begins

JANUARY 23

All encampments (102) removed from City owned parks and open spaces to-date.

APRIL 2023

S. Railroad Facility shelter expected to open (50 to 75 beds)

WHERE WE ARE NOW

154

*Encampments
removed
since June 24,
2022*

155+

*Campers
moved
since June 24,
2022*

1*

*Remaining
Camps
as of June 21,
2023*

52

*Citations issued
since May 31,
2023*

65

*Average # of people
served daily in the LRC
Day Center*

155

*Total # of unduplicated
people who used LRC
Day Center and
Overnight Shelter*

57

*Average # of people
using LRC night shelter
and motels this week*



WHERE ARE WE GOING

Understanding Homelessness in Loveland

Homeless Strategic Plan – Homeward Alliance

- Data-driven
- Sustainable and equitable
- Long term effectiveness in addressing homelessness through accessible resources
- Expand community education efforts
- Reduce Impact of Street Homelessness on individuals and community

Success Stories

Employment | Public Benefits

Document Readiness | Reunification

WHERE ARE WE GOING

Restoration

- Continue restoring other open land, parks and natural areas

Encampment Removal/Enforcement

- Continue regular cadence of encampment removal and enforcement
- Gearing up for spring/summer

Shelter/Day Resource Center

- Assess current sites for capacity/function
 - LRC sustainability plan
- Continue work with resource partners

Community Outreach/Public Education

- Street outreach to support homeless, businesses and residents
- Continued education and resources
 - Who to contact for encampment-related concerns
 - Understanding homelessness

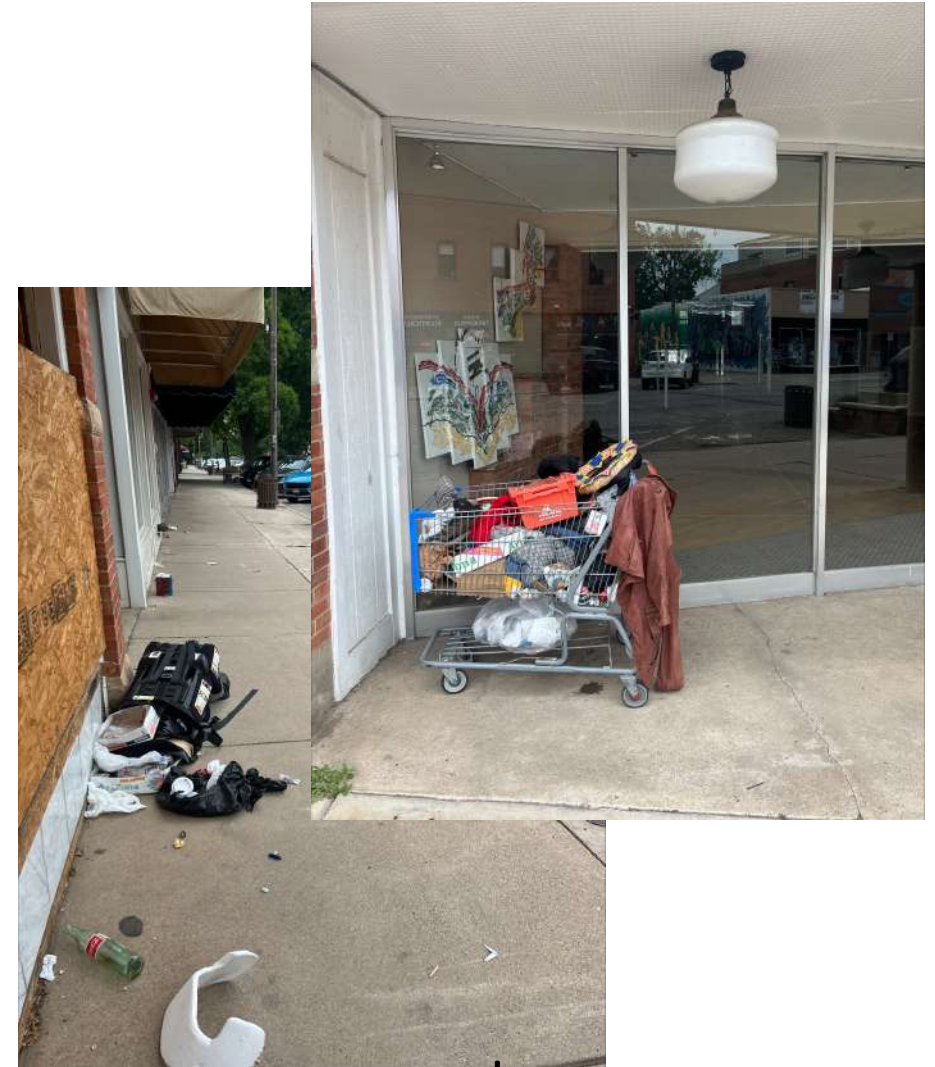


UNFORESEEN IMPACTS & CHALLENGES

moving to address new problems

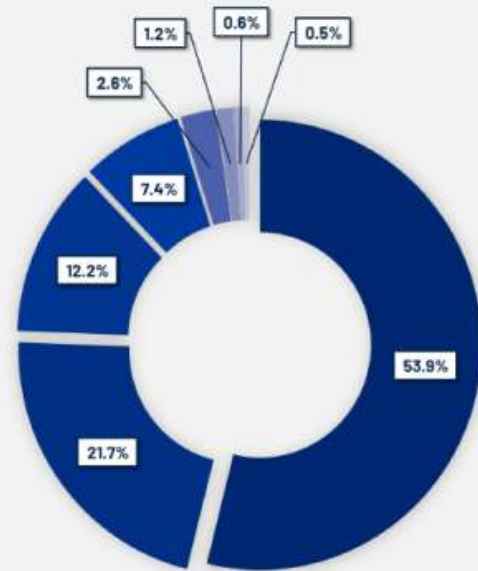
Impacts to Core Downtown

- Increased Presence & Activity Downtown
- Loitering & Littering; Panhandling
- Illegal and Aggressive Behavior
- Community Frustration & Fear
- Legal, Enforcement Options



FISCAL IMPACTS

a significant cost to addressing impacts



Year-to-Date Encampment Expenses (through May 31, 2023)

| | Amount |
|---------------------------|----------------|
| Temporary Shelter Capital | \$769,649.60 |
| Shelter Employees Payroll | \$310,151.65 |
| Motel Rooms | \$174,749.90 |
| Security/Fire Watch | \$105,674.76 |
| Environmental | \$36,589.56 |
| Misc. Expenses | \$16,483.67 |
| Storage | \$8,819.14 |
| Food | \$6,867.51 |
| YTD Total | \$1,428,985.79 |

LESSONS LEARNED (SO FAR...)

“Building the Airplane in the Air”

Be Prepared for the Long Haul

- A problem to be managed, not solved (yet)
- A Community problem, not just a City problem
- Be prepared to divert/delay services from other key departments if no additional resources are available.
- No “How To” manual; be adaptable and flexible
- Communication is key: internally and with Community





City of Loveland

QUESTIONS?



Sometimes It's the Lens



Lessons Learned for Colorado

Serving the community, housed and unhoused, is a path and journey not a single event

People First in the Community

Collaboration and networking are essential – don't just squeeze the balloon

Think of this as continuity of care

Not every solution fits every community

People first with staff

Training
Collaboration
Support



Tell Us About Your Successes

Public Works Leadership

- For more information on this topic or other Public Works and Utility challenges and opportunities, reach out to:
- American Public Works Association Colorado
- Mark Jackson, City of Loveland – Mark.Jackson@cityofloveland.org
- Keith Reester, City of Littleton – kreester@littletongov.org

