

Aurora's Approach to Addressing Youth Violence

CITY OF AURORA

Saadia Aurakzai-Foster – Community Engagement Division Manager

Joseph DeHerrera – Youth Violence Prevention Program Manager

Cpt. Mike Hanifin – Focused Deterrence Co-Director

Angela Lawson – City Council Member at Large

Andrea Wright – Youth Violence Prevention Program Community Coordinator



Program Inception

Major Milestones

Fall 2020

Funding secured by Aurora City Council

April 2021

First staff hired

May 2022

Strategic Plan adopted by City Council

City of Aurora Marijuana Tax Revenue

1%

(approximately \$1.1 million)



Community Based Organizations

Intervention

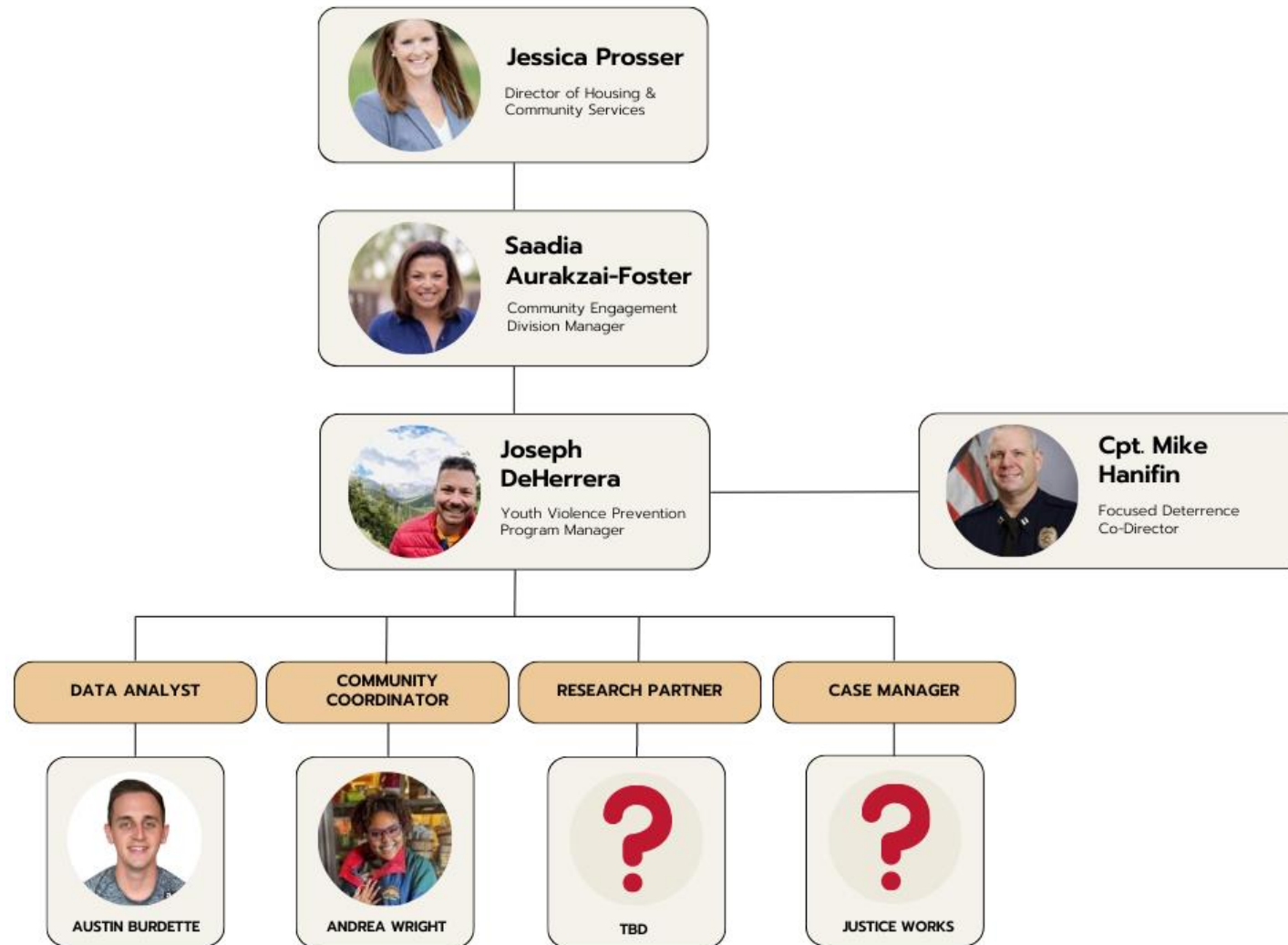
\$400,000

Prevention

\$100,000



Youth Violence Prevention Program Staff



Funding for Community-Based Organizations

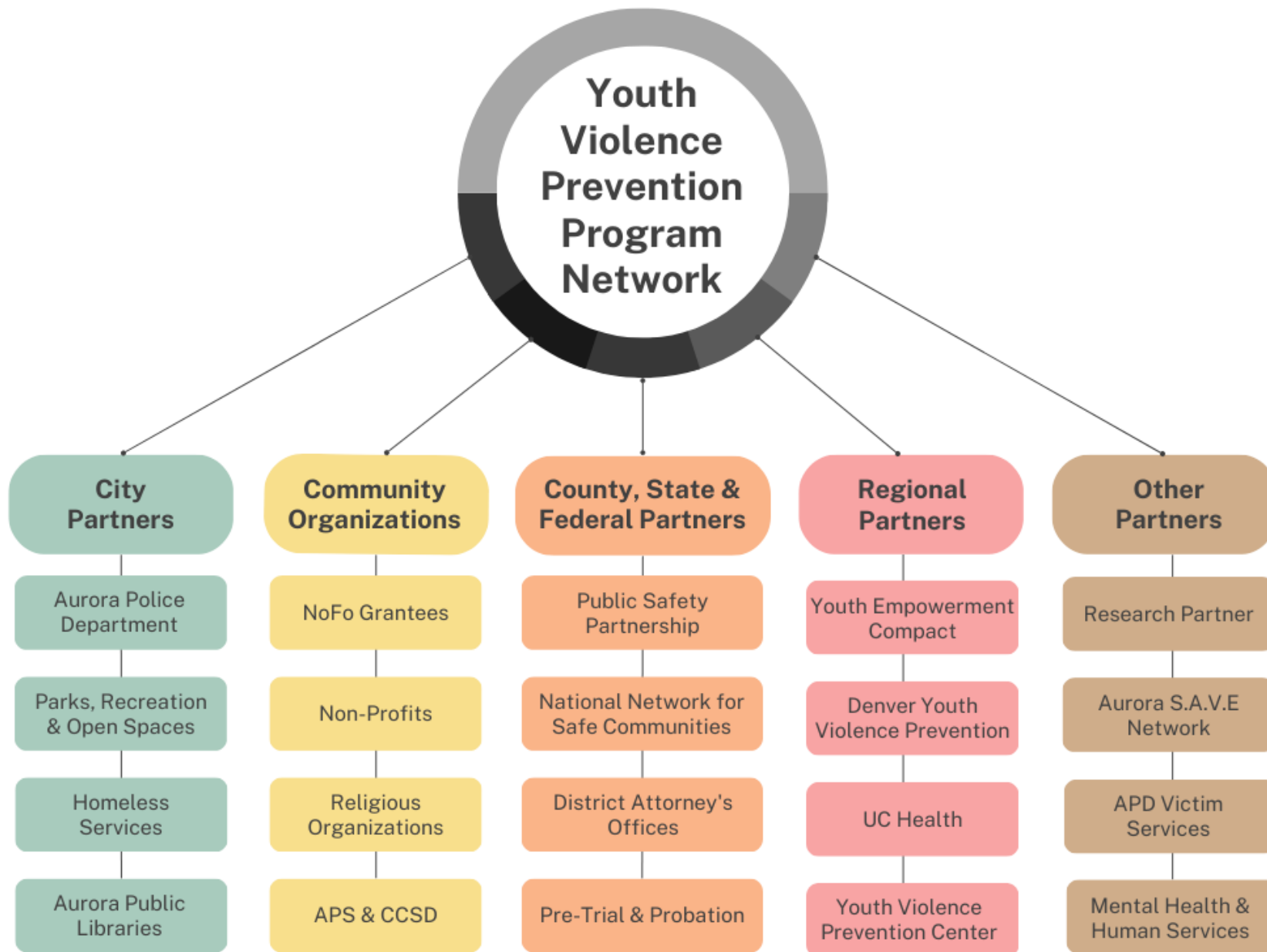
Intervention

Prevention



The Aurora Housing Authority™





Focused Deterrence

Aurora S.A.V.E.

(Standing Against Violence Everyday)



Public Safety Partnership Strategic Plan

SWOT ANALYSIS

STRENGTHS

Levels of engagement, support and willingness to collaborate

Regional approach

Amount of technical support available to program

Program Budget

WEAKNESSES

Gaps in provides to serve at-risk and high-risk youth

Lack of understanding around youth violence

Siloed Response

OPPORTUNITIES

Multi-Disciplinary stakeholder collaboration

Interest in developing violence reduction efforts

Innovative approaches

Organizational change opportunities

THREATS

Lack of data (youth violence and risk-factors and protective factors)

An initial Emphasis on prevention response; intervention response missing

Historical partnerships

Program Infrastructure

Develop the structure of the Youth Violence Prevention Program to ensure the success of a multi-year, multi-level, and multi-sector response to address youth violence.

Organizational Change

Develop and implement organizational changes to support the Youth Violence Prevention Program network's coordinated response to prevent and intervene in violent behaviors.

Intervention & Re-Entry

Create and support a network of partner agencies that can provide effective and efficient case management intervention and re-entry services to high-risk youth, families, and communities most impacted by violent crime.

Secondary Prevention

Deploy activities and services targeting at-risk youth and families.

Primary Prevention

Deploy targeted responses and focus on the entire population of high-crime, high-risk communities to reduce community risk factors and provide opportunities to increase protective factors.



YOUTH
VIOLENCE PREVENTION
PROGRAM

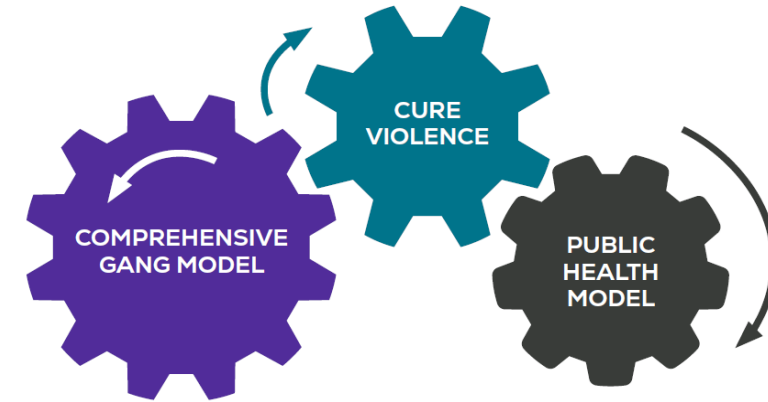
Youth Violence Best Practices



Community Assessment & Involvement

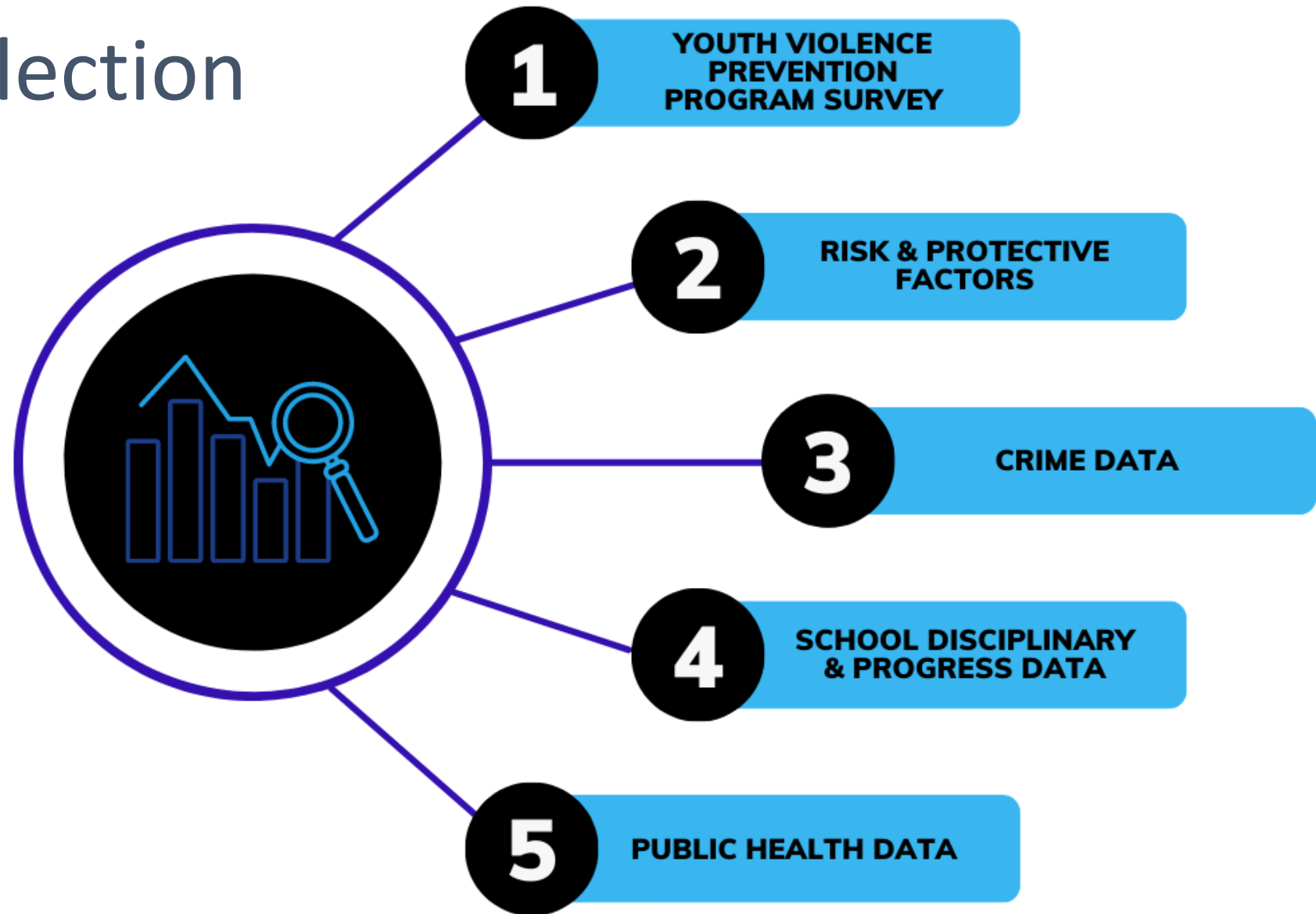


Intervention & Prevention Efforts



Evidence-Based Practices

Data Collection



Youth Violence Prevention Program Outcomes

2022 —————> **12** agencies **\$260,000** allocated **953** youth served



Urban Nature



A1 Boxing

Alma

A patient arrived after sustaining a life-ending gunshot wound. The outreach worker was present when the person came in, but there was no family present and the opportunity for involvement was limited due to the circumstance. About a month later, the patient's wife came to the emergency room with symptoms that resembled anxiety and depression which was related to the grief from the death of her husband. Her symptoms were treated in the ED and the social worker provided mental health resources in the community. In addition, the social worker reached out to the AIM administration directly requesting assistance.

UC Health AIM Program



Questions

