



Colorado's leader in promoting a vibrant economy

Building Resiliency in our Communities

Economic
Development Council
of Colorado (EDCC)

August 26, 2020





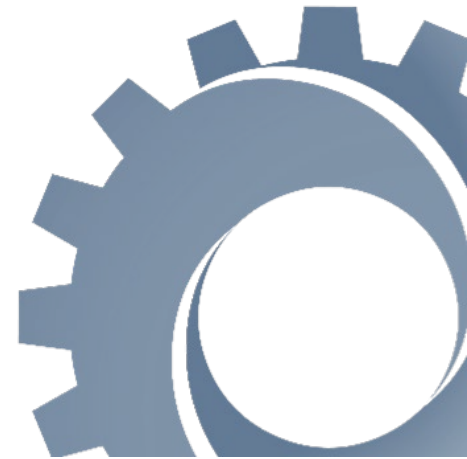
JEFFERSON COUNTY
ECONOMIC DEVELOPMENT CORPORATION



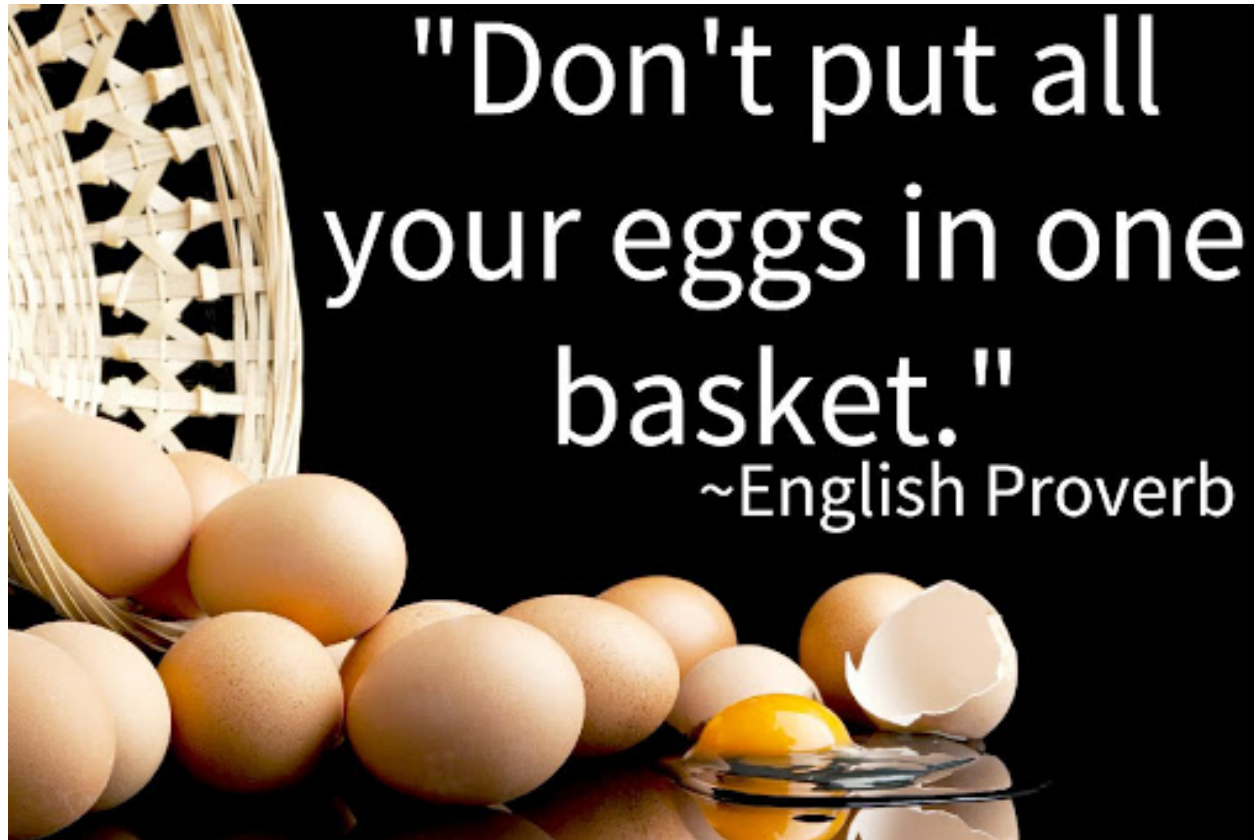
**OUR
MISSION**

Jeffco EDC is dedicated to preserving and enhancing the economic vitality of Jefferson County for its citizens through the retention, expansion and attraction of primary jobs.

- **What is economic diversity?**
- **What are the benefits of economic diversity?**
- **Understanding the data of economic diversity.**



What is economic diversity?

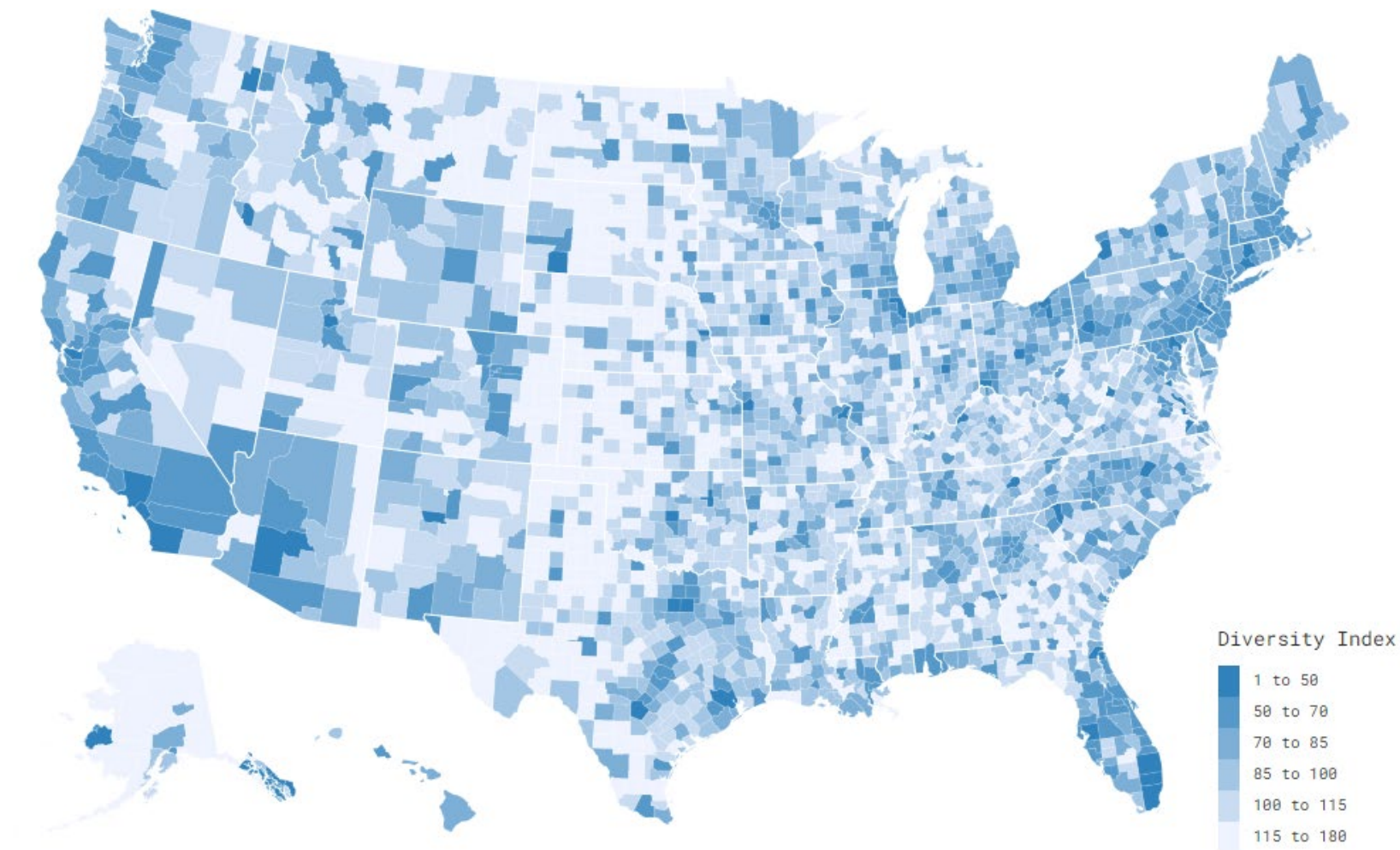


What is the benefit of economic diversity?

- **Supports multiple businesses – growth generator**
- **Flexible not fixed**
- **Innovation**
- **Creates a healthy economy**



What does economic diversity look like?

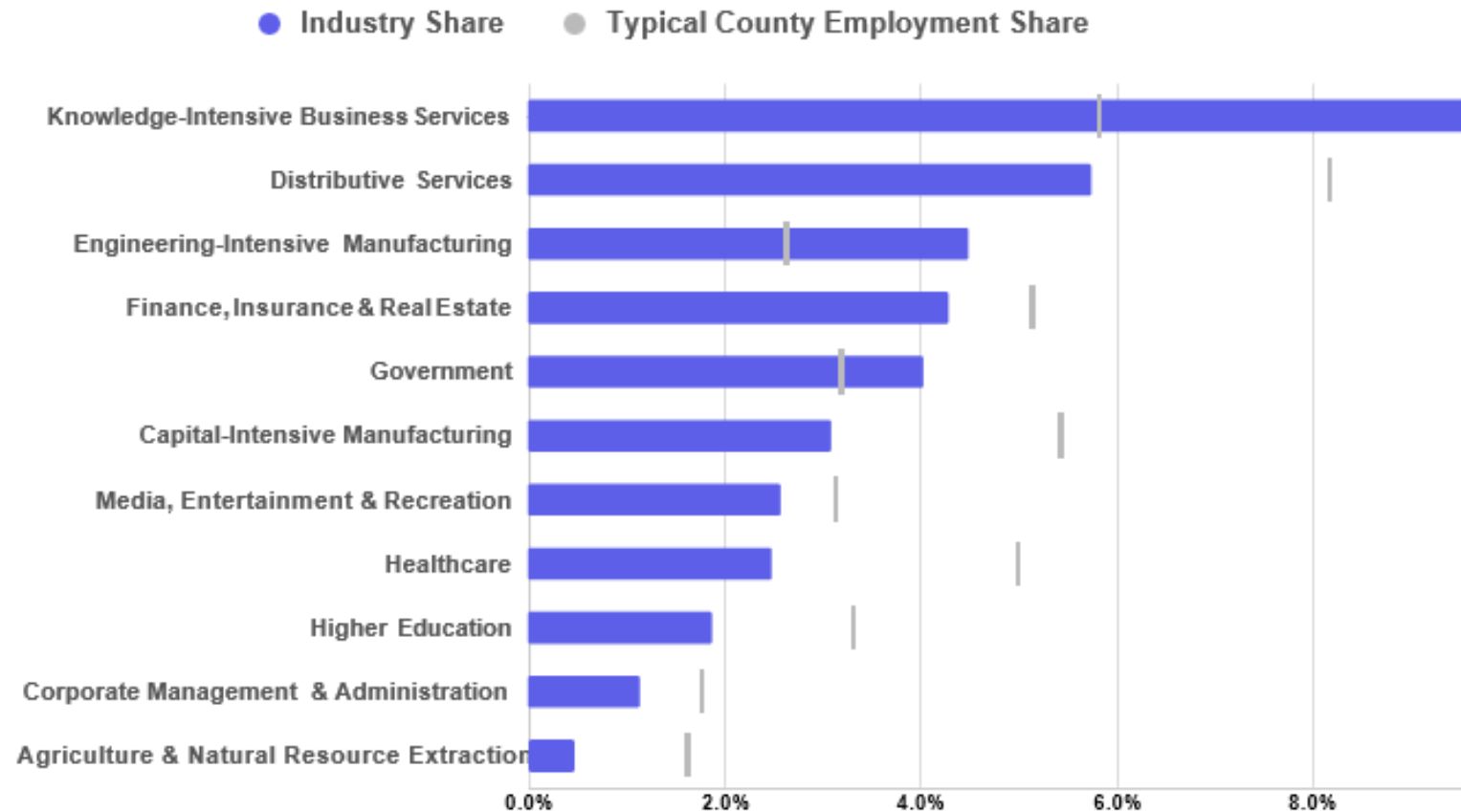


Source: Chmura Economics & Analytics, JobsEQ

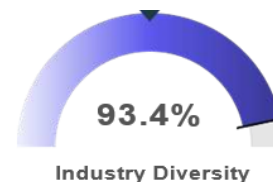


What does economic diversity look like locally?

Industry Cluster Shares



Rank: 207
(out of 3142 Counties)





JEFFCO EDC



JeffcoEDC.org



303-202-2965

A wide-angle landscape photograph showing a town with various buildings and houses nestled in a green valley. In the background, there are large, rugged mountains under a sky filled with heavy, grey clouds. The foreground is filled with lush green trees.

**Thank
You!**



Resiliency
for Colorado Municipal League

08.26.20

Xcel Energy – Company Overview

Serving eight states

- 3.6 million electricity customers
- 2 million natural gas customers

Nationally recognized leader:

- Wind energy
- Energy efficiency
- Carbon emissions reductions
- Innovative technology
- Storm restoration



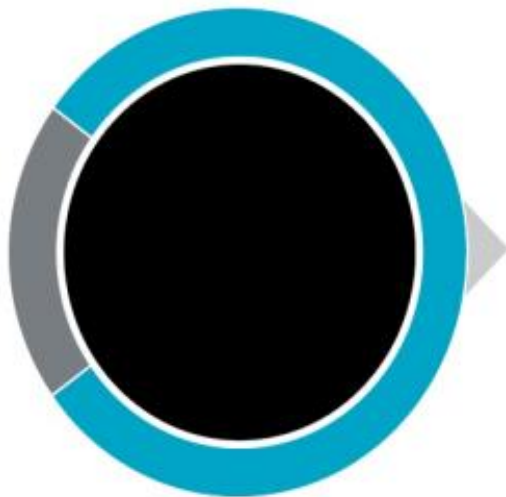
Leading the Clean Energy Transition

A bold vision for a carbon-free future

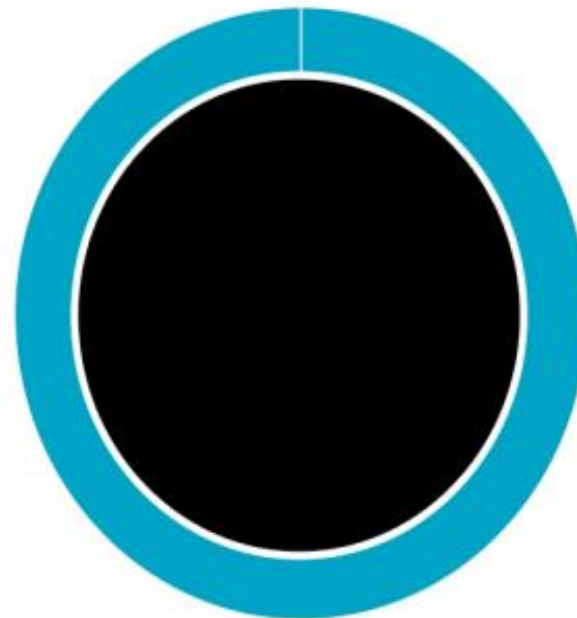
2018



2030



2050



COVID-19: Company Response

Reliability of our natural gas and electric system are our primary goals.



- As soon as it was clear COVID-19 was a national concern, Xcel Energy was quick to respond with measures to keep our employees and customers safe.
- Social distancing and masks became standard protocol and field workers no longer held large in-person meetings.
- Many employees that could perform their work remotely began working from home and continue to do so.

COVID–19: Supporting Colorado Communities

- **Employee Disaster Response Matching Gift Campaign:**
2:1 program raised \$147,256 for 115 nonprofits
- **Statewide Relief Effort:**
\$105,000
- **Donation of LED Light Bulbs:**
More than one million donated to Colorado Food Banks. One bulb saves \$55 during the bulb's life.



COVID-19 – Supporting Colorado Communities

- **Feeding America commitment:** Xcel Energy will make a \$100,000 company-wide commitment to support food access and relief
- **Frontline workers:** 90,000 protective masks donated
- **COVID-19 relief:** Additional \$96,000 awarded to focus area grant areas



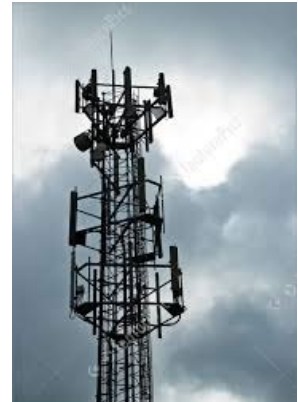
Community Resiliency Initiative

Solar plus storage based microgrids to support community resiliency

- Community partner defines “critical” infrastructure
- Xcel Energy brings battery storage and islanding capability
- Solar and other generation provided by site

Benefits

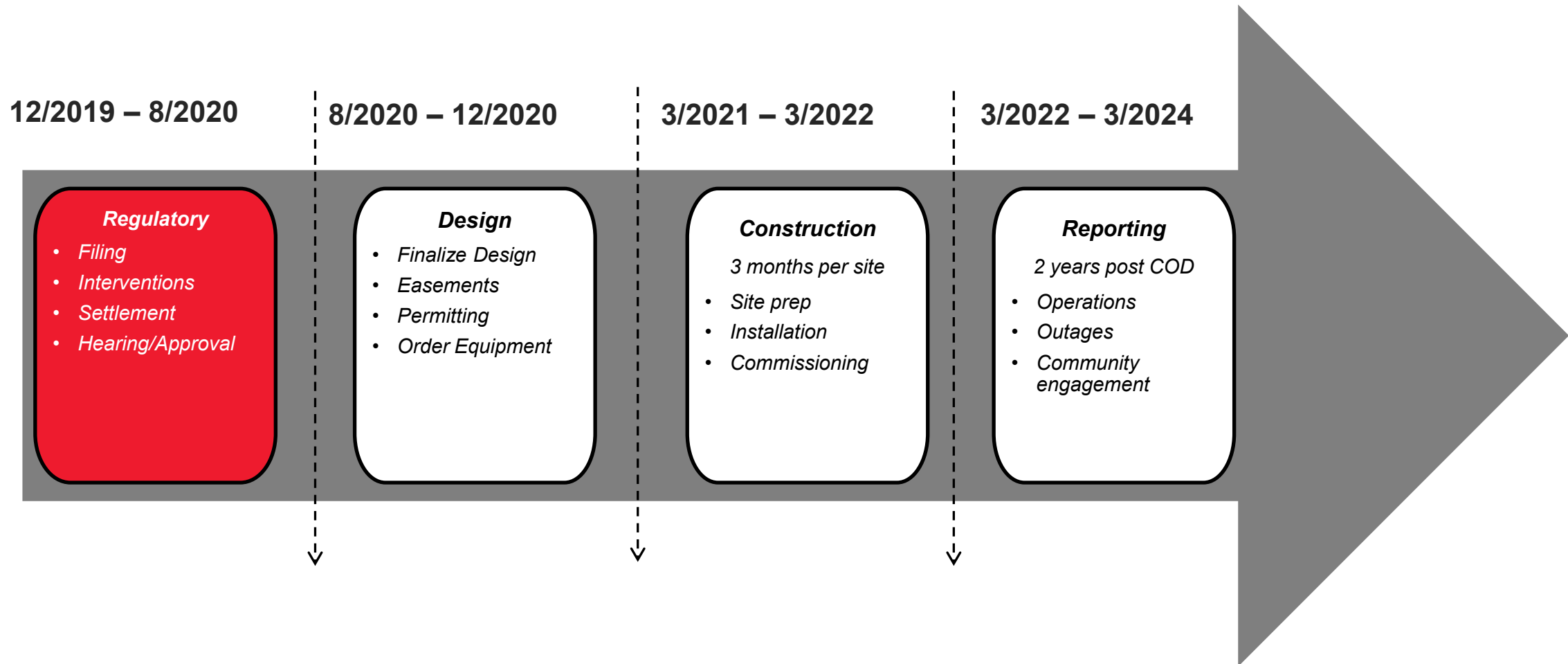
- Improves resiliency
- Supports Xcel Energy’s clean energy transition
- Provides grid benefits
- Provides clean energy jobs



Enabling legislation

HB18-1270 (<http://leg.colorado.gov/bills/hb18-1270>)

CRI Project Timeline



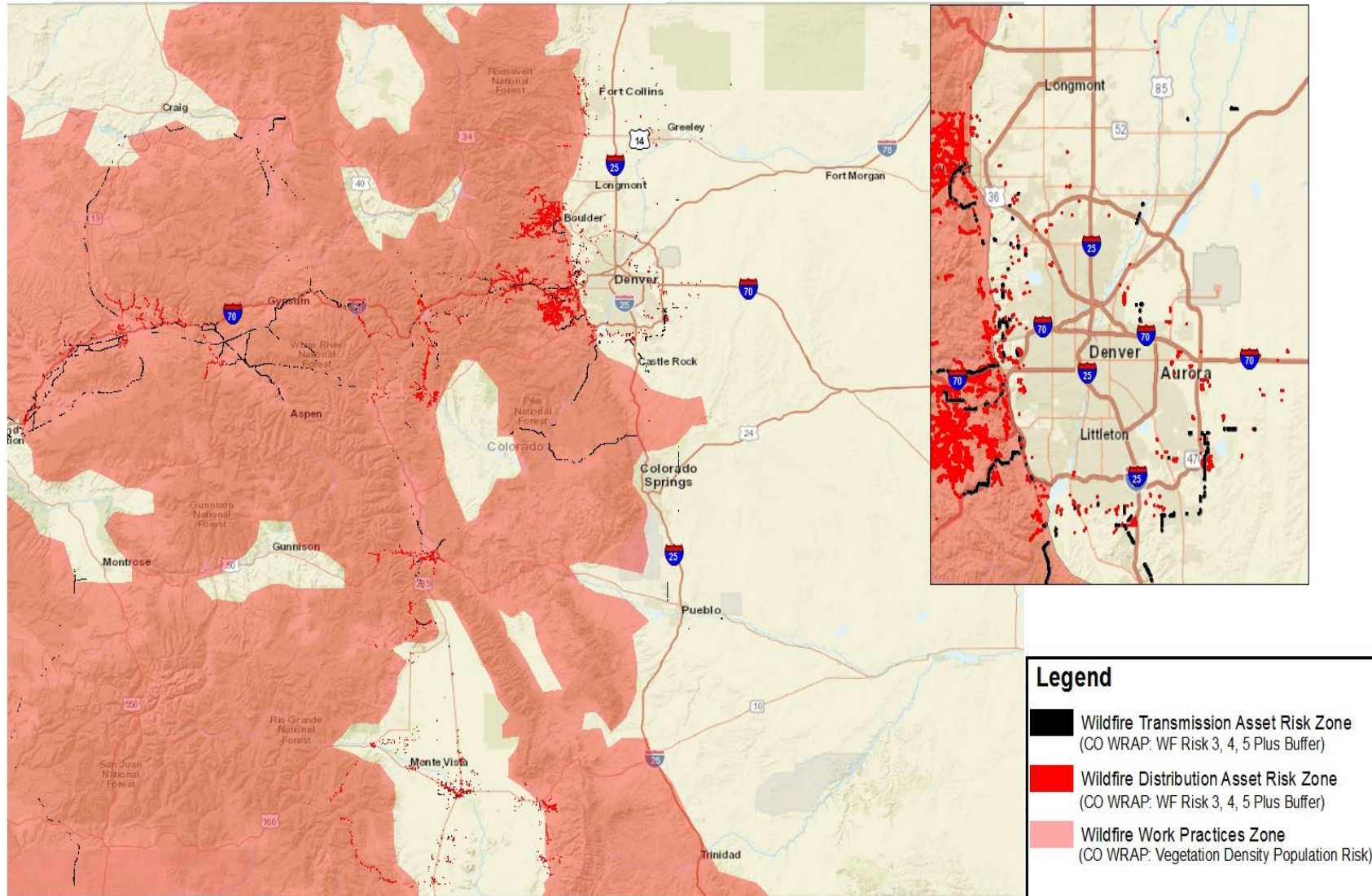
Wildfire Mitigation Program

Goals & Key Components

Minimize risks of equipment-caused ignitions causing wildfire

- Enhancing utility practices for inspecting and hardening assets
- Increasing operational flexibility to manage elevated fire threat conditions
- Engaging with communities and stakeholders
- Incorporating emerging technologies
- Filing an updated Wildfire Mitigation Plan with Colorado PUC (*August*)

Colorado Wildfire Risk Map



Advanced Metering Initiative

- Modernizing of Grid Management Operations
- Continuously remote communication of energy usage through radio frequency
- Communications through Field Area Network
- Customer access to different rate structures



Advanced Metering Initiative

- More timely and precise communications for outages
- More seamless integration of new technology
- 13,000 meters installed in Colorado
- Will install 65,000 meters per month beginning June 2021



Thank You

Contact Information

Preston Gibson

Area Manager, Community and Local Government Affairs

5460 W. 60th Avenue

Arvada, CO 80003

PHONE: 303.425.3944

E-MAIL: Preston.E.Gibson@xcelenergy.com







EDCC's Drive|Lead|Succeed Conference Goes Virtual in 2020

3rd Wednesday of every month until Dec. 2020

<https://edconline.org/product/2020-drive-lead-succeed-webinar-series/>

EDCC's Thursday Afternoon Club (TAC)

1st Thursday of every month until Dec. 2020

https://bit.ly/Sept_TAC

COVID-19 Resources for Economic Developers & Businesses

<https://edconline.org/covid-19-resources/>

Economic Development Council of Colorado

<https://EDCCOnline.org> | 720.260.4478

Operations Director:

Kim Woodworth, kim.woodworth@edconline.org

2020 Board Chair:

Michelle Claymore, Economic Development Director, City of Commerce City mclaymore@c3gov.com

